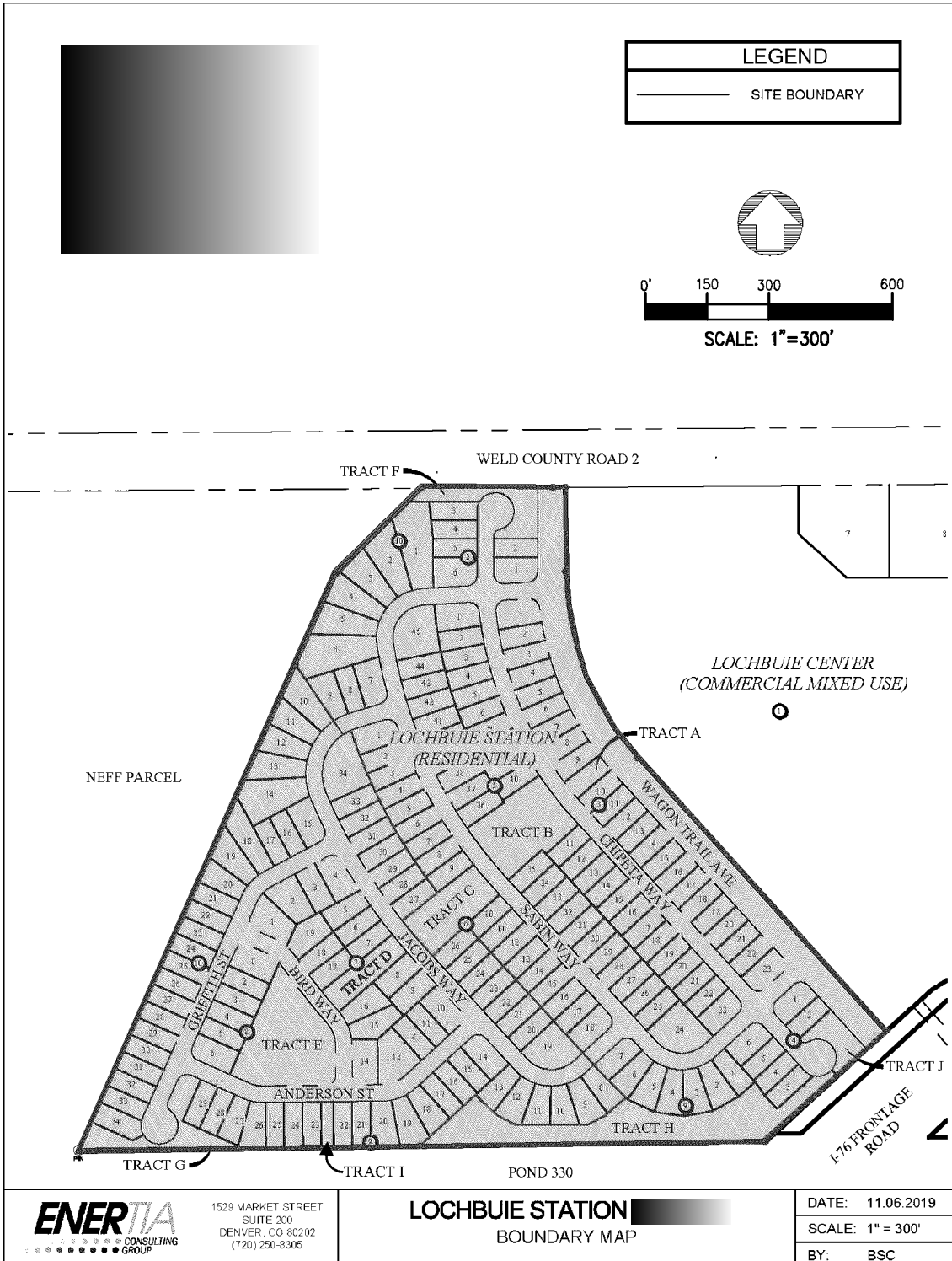


Boundary Map: Lochbuie Station Residential Metropolitan District
 Town of Lochbuie, Adams County, Colorado



Legal Description

Lochbuie Station Residential Metropolitan District

Lots 1 through 6, inclusive, Block 2,
Lots 1 through 23, inclusive, Block 3,
Lots 1 through 6, inclusive, Block 4,
Lots 1 through 45, inclusive, Block 5,
Lots 1 through 34, inclusive, Block 6,
Lots 1 through 19, inclusive, Block 7,
Lots 1 through 6, inclusive, Block 8,
Lots 1 through 29, inclusive, Block 9,
Lots 1 through 34, inclusive, Block 10, and
Tracts A, B, C, D, E, F, G, H, I and J
Lochbuie Center,

According to the plat thereof recorded January 28, 2019, at Reception No. 2019000006589, as ratified by Resolution No. 2019-9 by the Board of Trustees of the Town of Lochbuie recorded April 17, 2019, at Reception No. 2019000028239, County of Adams, State of Colorado